

Flower vending machine

«Flovend 1»

Manual



2014.

Content

Content.....	Ошибка! Закладка не определена.
1. Description	Ошибка! Закладка не определена.
1.1. Purpose.....	Ошибка! Закладка не определена.
1.2. Machine operation.....	Ошибка! Закладка не определена.
1.3. Control card.....	Ошибка! Закладка не определена.
2. Machine pre-starting procedures	Ошибка! Закладка не определена.
2.1. Installation	Ошибка! Закладка не определена.
2.2. Connection	Ошибка! Закладка не определена.
3. Machine settings.....	Ошибка! Закладка не определена.
4. Service menu	Ошибка! Закладка не определена.
4.1. Service menu navigation and parameter variation	10
4.2. Service menu structure	10
4.3. Detailed description of the menu options.....	Ошибка! Закладка не определена.
4.3.1. Menu option settings	Ошибка! Закладка не определена.
4.3.2. Menu option. Set bouquet's price	15
4.3.3. Menu option Download bouquets	15
4.3.4. Menu option. Upload bouquets	16
4.3.5. Menu option. Collection.....	16
4.3.6. Menu option. Download change	18
4.3.7. Menu option. Print information about machine states.....	Ошибка! Закладка не определена.
4.3.8. Menu option. Display rotation	Ошибка! Закладка не определена.
4.3.9 Bouquets reservation and payment mark.....	20
4.3.10 Menu option. Exit	Ошибка! Закладка не определена.
5. Process of purchasing.....	Ошибка! Закладка не определена.
6. Machine service	22
6.1. Printer service.....	Ошибка! Закладка не определена.
7. Viewer /statistics online management.....	24
8. Machine's technical characteristics.....	Ошибка! Закладка не определена.
8.1. Technical characteristics	Ошибка! Закладка не определена.
8.2. Mass-dimensional characteristics.....	Ошибка! Закладка не определена.
8.3. Operating conditions	Ошибка! Закладка не определена.
8.4. Transportation and storage	27

9.	Machine's completing units	Ошибка! Закладка не определена.
10.	Warranty.....	29

1. Description

1.1. Purpose

Flower vending machine «Flovend» (hereinafter machine) is designed for purchase the flowers in bouquets or by a single piece (depending on configuration). There is a general view of the machine on the Figure 1.



Pic 1. General view

Payment is made by the notes, besides the machine can be equipped with the cash acceptor. Floral display is cooled with integrated refrigeration unit to increase the shelf life of the flowers. Sales data and machine state are sent to the statistics server over the mobile communication of GSM standard, as well as by sending SMS alerts about the errors in the machine operation. View data statistics on a personal computer with the "Statistics control FLOVEND program".

1.2. Machine operation

The machine contains a compartment for flowers' purchase closed by a transparent glass and the technological part. 4 levels are set inside the display on the central axis; each level is divided by vertical transparent partitions at sectors (boxes) from 6 to 32 sectors per level (depending on the machine configuration). Display's central axis rotates at a speed of 2 rpm (recommended) counterclockwise, but the rotation speed can be reduced or increased from 0.5 rpm to 40 rpm on the gearmotor frequency convertor.

Display stops in the necessary position and automatically opens the door of the desired level for flower's issue in the moment of the order.

Machine structure is shown on the Figure 2. Technological part is designed with the main control board, power supply, the power board of the machine's power contour, frequency converter, cash acceptor, receipt printer, keyboard, cooling unit, water collecting tank(condenser tank). Access to the technological part is possible through the back door, access to the cash acceptor through the side door. Gearmotor is set at the top. Doors for goods issue are provided with the electromechanical actuators of the doors operating gear.

In case of the emergency shutdown of the power supply machine statistics will be saved.

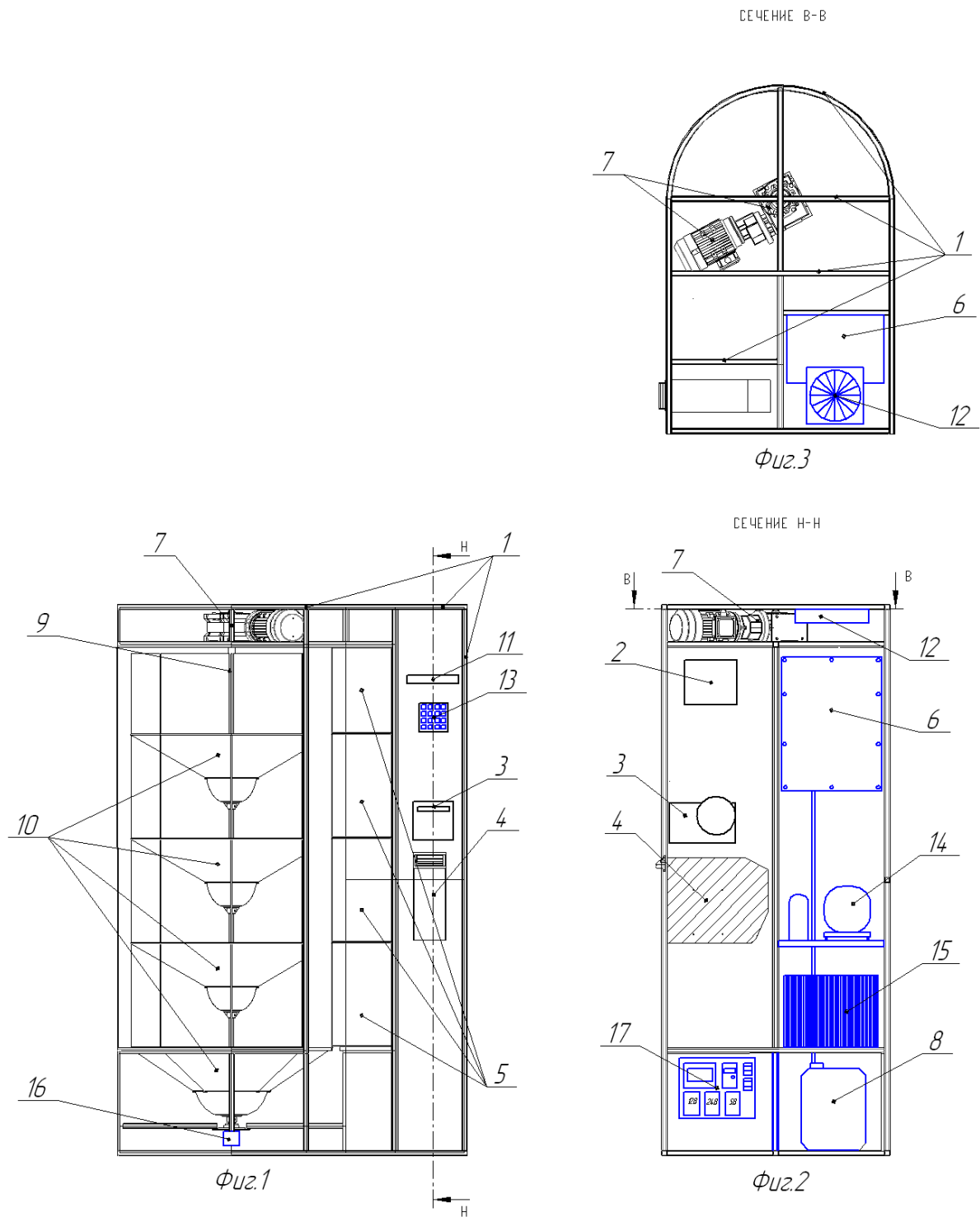


Fig. 2. Machine structure

- | | |
|---------------------------|-------------------|
| 1. Machine body; | 10. Shelf levels; |
| 2. Control board; | 11. Indicator; |
| 3. Receipt printer; | 12. Aspirator; |
| 4. Cash acceptor; | 13. Keyboard; |
| 5. Doors for goods issue; | 14. Compressor; |
| 6. Freezer; | 15. Condenser; |
| 7. Gearmotor display; | 16. Encoder; |
| 8. Condenser tank; | 17. Breaker box; |
| 9. Display central axis; | |

Control card

Figure 3 shows the control card with the connector designation and other main elements.

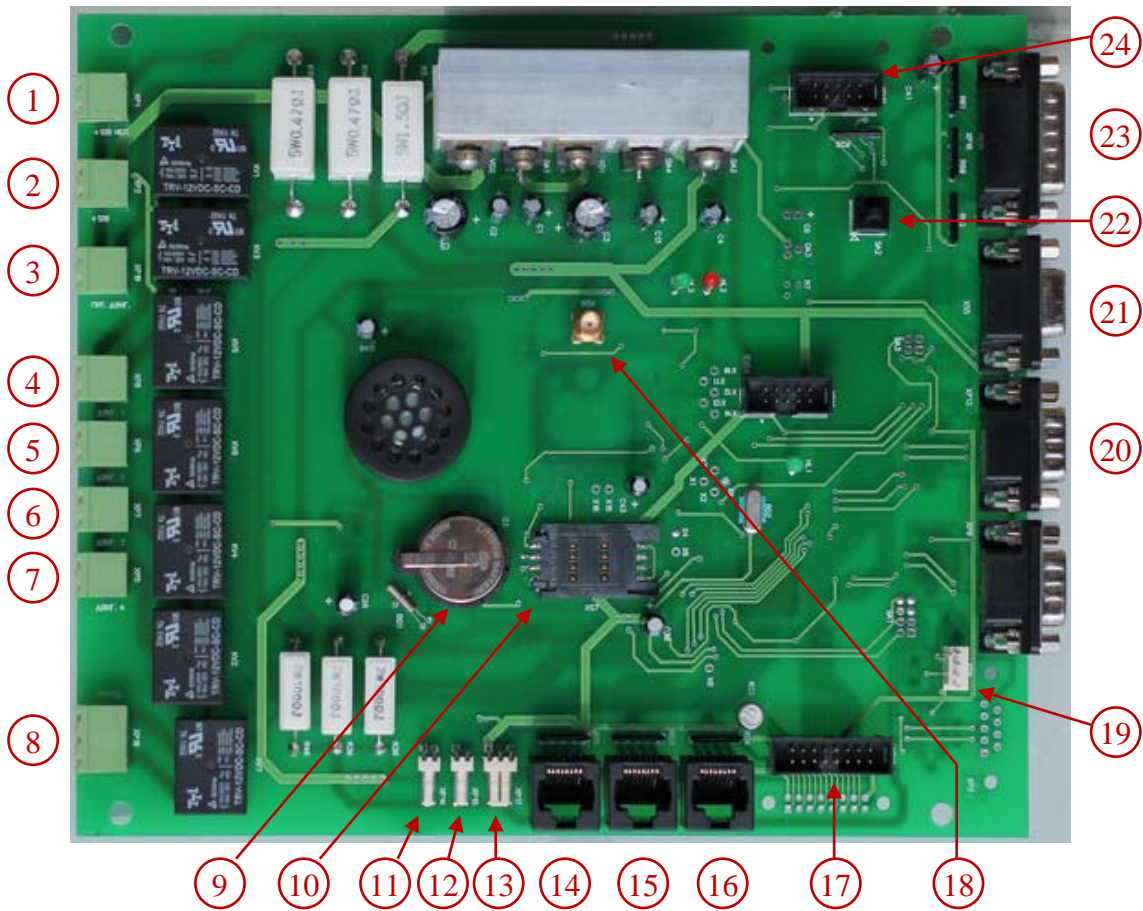


Fig.3 Machine control card

Units connected to the card and main elements indicated on the Figure 3:

- | | |
|-------------------------------|---|
| 1. UPS; | 13. Temperature sensor; |
| 2. Main power of the card; | 14. Doors switches №1 и №2; |
| 3. Door operating gear power; | 15. Display rotate button; |
| 4. Door operating gear №1; | 16. Doors switches №3 и №4; |
| 5. Door operating gear №2; | 17. LCD display; |
| 6. Door operating gear №3; | 18. Aerial; |
| 7. Door operating gear №4; | 19. Cash acceptor; |
| 8. Refrigerator compressor; | 20. Printer; |
| 9. RTC battery; | 21. Display rotate variable frequency drive ; |
| 10. Sim-card holder; | 22. Login button to the service menu; |
| 11. Power relay 220V; | 23. Display encoder; |
| 12. Power button to the menu; | 24. Keyboard. |

2. Machine pre-starting procedures

2.1. Installation

Flower vending machine «Flovend» is mounted on any flat horizontal surface right under its width and depth (see section 7). Body should not deviate more than 10 degrees in any plane during operation; otherwise there can be random distribution of the liquid in the display bowls. Refrigeration unit must be provided with the clearance between the back of the machine and the wall at least 40 cm for normal operation. After installation fix the wheels with the brake.

2.2. Connection

Power connection of the flower vending machine must be connected to the socket with the grounded contact (CEE plug). Voltage supply must correspond to the technical characteristics of the machine (see section 7). Recommended to connect the machine through the network filter, compatible with the electrical characteristics of the machine power.

You must install a SIM card in the card holder located on the control board (see figure 3, POS. 10) for statistics operation module. Along with it, PIN code must be disabled.



Pic. 3

For flower vending machine operation turn on the emergency stop switch 1 and RCD 2 (Fig. 2) at the electrical panel 17 (Fig. 4, Fig.2) located inside the machine. Wait about a minute for full switching. After initialization of all devices, temperature and time data are read, errors are checked.

The machine is ready for usage after the inscription on the display "ENTER the CODE of the BOUQUET". After that, the machine is ready for operation. Non-manual workers are not required, except the cases of using the service menu (for example, setting the cost of the bouquet, adding flowers or collection).

Turn off the same toggle switch to shut down the machine.

You must configure the machine before the operation. Use the service menu of the machine (see para. 4).

3. Machine settings

Enter the service for operating parameters configuration. Press and hold service button for 3 seconds on the card to enter the service menu. (Fig.3, pos.23) or on the button located behind the door of the cash acceptor.



Рис. 4. Display. Message to service menu entrance.

Speed of the display rotation in the mode of bouquets purchase is set by the regulator on the front panel of the frequency converter (see figure 4). Rotate the regulator clockwise to increase the speed; to decrease the speed - counterclockwise.

4. Service menu

4.1. Service menu navigation and parameter variation.

Service menu navigation and parameter variation is made with the help of the keyboard (Fig.6)

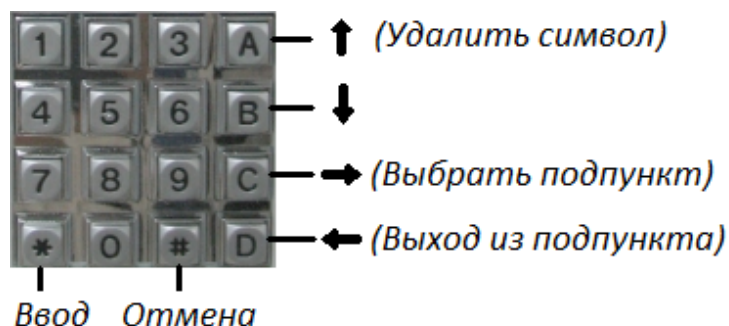


Рис. 5. Keyboard. Key designation.

To move in the menu following keys are used:

- A – Up in the menu;
- B – Down in the menu;
- C – Submenu selection;
- D – Submenu out;
- # – Undo the changes;
- * – Conforming the changes;

Keys may have the following designation in case of parameter changes

- A – Parameter incensement;
- B – Parameter decrease;
- C – Move to the left;
- D – Move to the right;

Key A is used to delete the symbol under the cursor in items that require symbol removal. Standard keyboard layout is used to enter the letters which is used on push-button phones. While pressing the button several times with the short intervals between key presses letters change relevant to the button.

Letters and symbols keyboard buttons:

- 0. «Space» 0
- 1. ., \ - ! ?
- 2. А Б В Г 2 А В С
- 3. Д Е Ё Ж 3 Д Е F
- 4. И Й К Л 4 Г Н I
- 5. М Н О П 5 J K L
- 6. Р С Т У 6 M N O
- 7. Ф Х Ц Ч 7 P Q R S
- 8. Ш Щ Ъ Ы 8 T U V
- 9. Ь Э Ю Я 9 W X Y Z

4.2. Service menu structure

Service menu structure is shown in the Table 1 with stated menu option and submenu.

Table 1. Service menu card

Menu option	Submenu 1	Submenu 2
Settings	Display's zero position	
	Date/Time	Date
		Time
	Company name	1 line
		2 line
	TIN	
	Support number	
	Refrigerator	Temperature
		Max. operation time
		Min. rest time
	Statistics	Statistics server. IP Address
		Statistics server. Passport number
		Statistics server. Password
		On/off. statistics module
Tel. Number for SMS		
	Min. hold between SMS, minutes	
Set price	All bouquets price	
	Bouquets price on the level	
	Bouquets price in a box	
Download bouquets	Download all bouquets	
	Download a level	
	Download a box	
Download the bouquets	Download all bouquets	
	Download a level	
	Download a box	
Cash collection	Only cashbox	
	All money	
Download the change		
Print information about machine state		
Display circle		
Exit		

4.3. Detailed description of the menu options

4.3.1. Menu option - Settings

Settings> Display's zero position

Purpose: display stop settings, opposite the door of the bouquet issue

On the display:

Choose the speed 1,2,3. Hold:
A-Forward, B-Back, Accept-*, delay-#

Choose display speed rotation (1-low, 2-middle 3-high), press and hold A or B button for display rotation forward or back. Move display to A1,B1,C1,D1 boxes were set in front of the issue window. Press * for settings acceptance, find REMIND on the display (zero position is set).

Settings> Date/Time

Purpose: data and time settings. Date and time store in energy dependent clocks, charged from the battery set on the control card.

To set a date and time press C ,D, pressA and B to change parameters. Press * to accept the settings, find REMIND on the display.

Settings> Date/Time > Date

On display:

Date settings
01/04/2014

Settings> Date/Time > Time

On display

Time settings
04:20

Settings> Company name

Purpose: set company's name printed on the check. There are two lines with 32 symbols to enter company's name.

On display:

Company name 1 line 32 symbols
OOO "Tcvety"

Settings> TIN

Purpose: set TIN printed on the check.

On display:

TIN. 12 numbers
323500157503

Settings > Support number

Purpose: set Support number printed on the check and indicator and indicator in case of machine's malfunction.

On display:

Support number 11 numbers
89012345678

Settings > Refrigerator

Purpose: set freezer's operating states

Key A to increase the value, B to decrease the value. Temperature changing for 1C – 1 minute.

Settings > Refrigerator> Temperature

Purpose: set display temperature

On display:

Temperature. A - more, B – less.
6

Settings > Refrigerator >Max. time operation

Purpose: set maximum time of compressor's continuous operation

On display:

Max. operation time A-more, B-less
60

Settings > Refrigerator >Min. time operation

Purpose: set minimal time of compressor's rest

On display:

Min. operation time A-more, B-less
10

Settings> Statistics**Settings> Statistics > Statistics server. IP address**

Purpose: enter Statistics server IP address. Enter address digit with three numbers. Add zeroes before the numbers if there is digit or double digit numbers.

On display:

Statistics server address
188.143.235.053

Settings> Statistics > Statistics server. Port number

Purpose: enter port number of the statistics server.

On display:

Statistics server address
7432

Settings > Statistics > On/off statistics module

Purpose: switch on and off statistics module. If you switch off statistics module exchange with statistics server and SMS alerts will be disabled. If statistics and SMS alerts are not used do not switch off statistics module.

If module is ON; *on display:*

Statistics module ON
OFF?

Press * to turn off and confirm

If the module is OFF; *on display:*

Statistics module OFF
ON?

Press * to switch On and confirm

Settings > Statistics > Tel. Number for SMS

Purpose: accept SMS notifications about errors. You may change the number via statistics server.

On display:

Tel. Number for SMS
89101234567

Settings > Statistics > Min. hold between SMS

Purpose: set minimal hold between SMS notifications about errors.

On display:

Time, minutes. A – more, B - less
20

4.3.2. Menu option. Set bouquet's price.

Purpose: set bouquet's price. Maximum price: 65000 рублей. Bouquet's price divisible to 10 rubles. If set amount is not divisible to 10 it rounds to 10.

Set bouquet's price > All bouquet's price

On display:

Enter all bouquet's price

Set needed amount pressing the keys on a keyboard. Press * to accept settings, find on display REMIND.

Set bouquet's price > Bouquet's price at the level

On display:

Choose the level:
Level A

Choose the level with A, B keys, confirm C.

On display (e.g. level A):

Enter bouquet's price at the level A

Set the price and press * for settings saving.

Set bouquet's price > Bouquet's price in a box

On display:

Enter bouquet's code:

Enter box's code, confirm*

On display (I.g. box A1, current price 500 rubles):

Set bouquet's price in A1 box
500

Set the price and press * to save settings.

4.3.3. Menu option. Download the bouquets

Purpose: choose the boxes with bouquets. It is necessary to download every time when the box is filled with bouquets. If the box was loaded beforehand and was made the reload, then loading time will not be changed. If you need to refresh the loading time, e.g. to change the bouquet, at first issue the bouquet (see para.4.3.4), and then download.

During download displays date and time.

Download bouquets > Download all bouquets

On display:

Downloading time: 21/06/14 10:51:00

Download all bouquets? * - Yes, # - No.

Download bouquets > Download level

On display:

Choose the level:

A level

Choose the level with A, B keys, confirm C.

On display (e.g. level A):

Downloading time: 21/06/14 10:51:00

Download A level? * - Yes, # - No.

Download bouquets > Download the level

On display:

Enter bouquet's number:

Enter box's code, confirm *.

On display (e.g. box A1 box):

Downloading time: 21/06/14 10:51:00

Download A1 box? * - Yes, # - No.

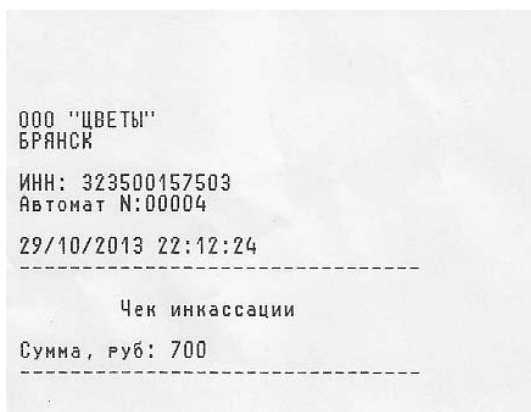
4.3.4. Menu option. Download bouquets

Purpose: choose the boxes without bouquets and which no need to purchase; or used before the loading to refresh downloading time.

Bouquet's downloading is made as downloading (see para 4.3.3).

4.3.5. Menu option. Cash collection

Purpose: to execute cash collection. In this menu displays revenue for the machine operation period since previous cash collection in rubles. Check is printed after collection confirmation, then amount resets. See the example on the picture 7.



Pic. 6. Collection check

For machine with BNA version without change*On display (e.g. amount equals 25500 rubles.):*

Total, rubles: 25500
Execute collection? * - Yes, # - No.

In case of collection confirmation check is printed

For machine with BNA version with change (NV200+Smartpayout)*On display (e.g. change is 25500 rubles.):*

Collection
Only cashbox, rubles.: 25500

Choose this option – press C and confirm * to take the cash only from the cashbox.

Choose ALL MONEY with B key to take all cash including change module. Total will be shown on a display.

On display (e.g. 45800 rubles.):

Collection
All money, rubles.: 45800

Press C for collection and confirm *.

BNA upload all notes from a change module to a box for full collection. Open front door and take out the box after the end of the operation.



Pic. 7. Cash box NV200

4.3.6. Menu option. Download change

Purpose: enter the notes to change module. You may enter up to 78 notes of different value, putting them into the hole for note's acceptance, among them 10 rubles - 9 pieces, 50 rubles - 12 pieces, 100 rubles – 31 pieces, 500 rubles – 18 pieces, 1000 rubles – 8 pieces. On display is shown the quantity of each value and maximum quantity which is possible to enter (/).

On display:

Notes:	10	50	100	500	1000
Number:	0/9	0/12	0/31	0/18	0/8

If the number of the notes of this value does not exceed the maximum number in the change module, then the note enters to the change module, otherwise to the cash box. Therefore, BNA with the change issue may complement the change of necessary quantity and value according to the set number of the notes.

4.3.7. Menu option. Print information about machine states.

Purpose: printed check (Pic.9) with the following information set in the machine: company name, TIN, machine number, software version, support number, temperature, display current temperature, date, time. After that stated boxes with bouquets price, date and time of downloading and bouquet's issue. Bouquet is not sold if the line SOLD is empty.

ООО "ЦВЕТЫ" БРЯНСК ИНН: 323500157503 Автомат N:00004 Версия программы: 1.0.3 Тел. техподдержки: 89101234567 Температура уст.: 25 Температура изм.: 23,0 29/10/2013 22:11:56				B3 50 29/10/13 29/10/13 13:43:44 22:11:09 B4 50 29/10/13 29/10/13 13:43:44 22:10:00 B5 50 29/10/13 29/10/13 13:43:44 21:14:40 B6 50 29/10/13 13:43:44 C1 50 29/10/13 13:43:44 C2 50 29/10/13 13:43:44 C3 50 29/10/13 13:43:44 C4 50 29/10/13 13:43:44 C5 50 29/10/13 13:43:44 C6 50 29/10/13 13:43:44 D1 50 29/10/13 13:43:44 D2 50 29/10/13 13:43:44 D3 50 29/10/13 13:43:44 D4 50 29/10/13 13:43:44 D5 50 29/10/13 13:43:44 D6 50 29/10/13 13:43:44			
----- Букет Цена Загружен Продан -----							
A1	500	29/10/13	29/10/13				
		13:43:44	13:45:22				
A2	500	29/10/13	29/10/13				
		13:43:44	21:25:05				
A3	500	29/10/13					
		13:43:44					
A4	500	29/10/13					
		13:43:44					
A5	500	29/10/13					
		13:43:44					
A6	500	29/10/13					
		13:43:44					
B1	50	29/10/13					
		13:43:44					
B2	50	29/10/13					
		13:43:44					

Pic. 8. Check information about machine state

On display:

Print information about machine state?
* - Yes, # - No.

Press * to confirm.

4.3.8 . Menu option. Display rotation.

Purpose: display rotation under downloading the bouquet into the machine.

On display:

Choose the speed 1,2,3. Hold:
A-Forward, B-Back, Delay-#

Choose display's rotation speed (1-low, 2-middle, 3-high), then press and hold A or B for display rotation forward or back.

4.3.9. Bouquets reservation and payment mark.

Option is available since version 2.0.5.6

To reserve bouquets (with the subsequent machine payment) you shall:

- 1 If the bouquet is not downloaded , download it in the Service menu.
- 2 In the menu option “RESERVE THE BOUQUET choose the box and confirm the reservation.
- 3 Print CHECK INFORMATION ABOUT THE MACHINE STATE and check that the box is reserved (At the end of the check). In the check the number of the box, the secret code to get the bouquet and the mark "Reservation" must be specified.

To mark the bouquet as PAID (to receive the bouquet without the machine payment) you shall make the following steps:

- 1 If the bouquet is not downloaded , download it in the Service menu..
- 2 In the menu option “RESERVE THE BOUQUET choose the box and confirm the payment.
- 3 Print CHECK INFORMATION ABOUT THE MACHINE STATE and check that the box is paid(At the end of the check). In the check the number of the box, the secret code to get the bouquet and the mark "Paid" must be specified

RECEIVING OF THE RESERVED AND PAID BOUQUETS.

To receive the paid bouquet the code is entered as during reopening: "*" is held then the secret code is held.

To receive the reserved bouquet the secret code is entered as during reopening and then the payment is made.

4.3.10. Menu option. Exit

Purpose: exit from a service menu

Choose this option and press * to exit from a menu

5.

5. Process of purchasing

Purchase is made as follows: Enter two-digit code which is stated on each sectors near the bouquet with the sign «ENTER BOUQUET'S CODE: ... »

Then: « ENTER BOUQUET'S CODE: A3», if wrong code was entered, see on display «ENTERED WRONG CODE», if right code is entered, see on display «BOUQUOTE'S PRICE 1200 ruble». Put the notes into the BNA. Press # to delay the purchase.

After purchase printer prints a check (Pic. 10) with company's properties, purchase time, bouquet's price, and support number. Machine will print a refund check in case of an error.



Fig. 9. Check for purchase

6. Machine service

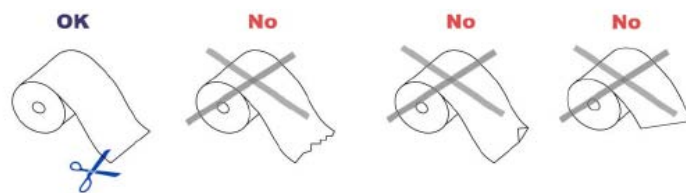
During machine operation there is condensation in the fridge, which collects in the condensate tank. Condensate tank must not be overfilled. Remove entrained water in time.

Clean the machine at least once per two month. Most susceptible to dust accumulation places are: the condenser, compressor, exhaust fan, as well as the places through which enters and removes the air: the technological holes on the back door, in front of the condenser, and aspirator.

WARNING! Transparent doors and display are made of organic glass. Do not use acetone, ethanol, dissolvent for cleaning, which may cause window's damage. Use water with the soap or domestic detergent.

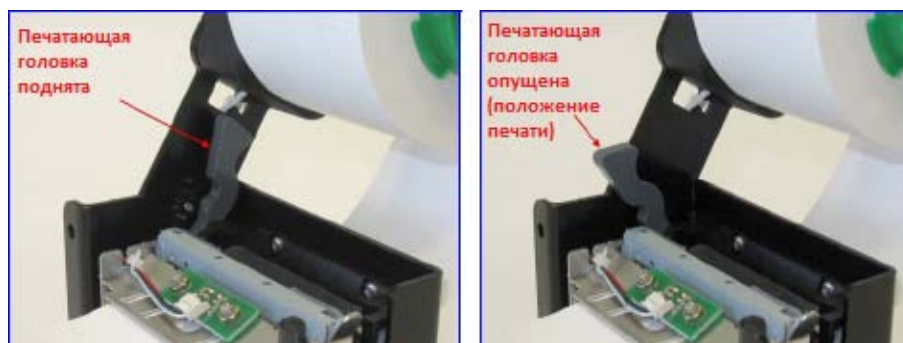
6.1. Printer service

KM 324 HRS-V2 printer has automatic check's cut/half-cut (automatic tape feeding) Thermo tape places into the printer with 80 mm width and 150 mm diameter. You may place the paper in time of machine operating. Place the paper's thermo layer down (see the scheme)



Pic 10. Right and wrong paper using

To place the paper, remove green plastic holder, set the roll, cut one edge of the paper and insert in the slot. In case of paper jam, press out the fixture, prolong the paper and fix the lever (see Fig. 12).



Pic 11. Position of the lever of print head

In case of jamming, unscrew 4 nuts, turn the lever of print head to RAIS position, pull fixate of paper cut , turn the cutter (Fig. 13), remove the jammed paper and set the printer into place.



Fig. 12. Removal of jamming.

7. Viewer /statistics online management.

Use Internet for statistics display. It is necessary to install free Java version(e.g. Java 5), unzip "FLOVEND Statistics" on your computer and run FlowerMachineClient file. Enter the user-name/password given to you as on Fig. 14 and press "Enter".

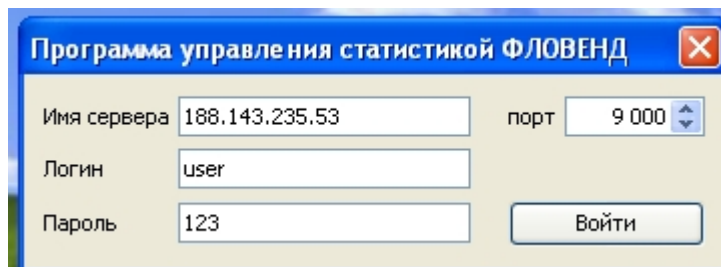


Рис. 13

Your machines and their parameters will be shown in the Running screen. (Fig. 15)

Номер автомата	Расположение	Сумма (рубли)	За последний день (руб...	За предыдущий день (р...	Температура	Включен	Ошибка	На связи
25	МЕПЬНИЦА	900	0	0	13.0	<input checked="" type="checkbox"/>		<input checked="" type="checkbox"/>
24	АЭРОПАРК	18650	0	0	9.0	<input checked="" type="checkbox"/>		<input checked="" type="checkbox"/>

Рис. 14

Description of program fields:

Machine № – machine number in the system coincides with the last 2 numbers of machine's serial number.

Location – Set the location address with the key «Detailed»;

Amount (rubles) – Total amount for the time of operation;

Last day (rubles) – Amount for the last 24 hours;

Previous day (rubles) – Amount for the previous 24 hours;

Temperature – Temperature in the fridge (updates every 3-5 minutes is the machine connects to GSM);

On – On/off machine's state. Machine doesn't sell the goods while it is off.

Error – In line is shown errors with the codes:

- 0 No error
- 11 No power 220V
- 21 Printer
- 31 Thermometer
- 41 Cash acceptor
- 51 Doors
- 52 Doors. Time opening is exceeded.
- 53 Doors. Overload in a current.
- 61 Position switches
- 71 Display
- 72 Display. Time positioning is exceeded
- 73 Display. Number of attempts is exceeded.

The message of all errors is sent by SMS to the number specified in the menu "Details" and settings "Send SMS"

In touch – shows if the machine in touch or not

Buttons:

Statistics: In this menu shows the sale statistics for the chosen time period. After setting the period press the button “View statistics”

ячейка	деньги (рубли)	время
A 2	400	02-04-2014 12:44:51
C 6	500	10-04-2014 17:46:35
A 2	400	11-04-2014 19:22:15
B 1	400	15-04-2014 15:05:43
B 2	400	16-04-2014 14:46:07
C 5	500	16-04-2014 18:25:14
B 4	500	19-04-2014 18:02:57
C 6	500	22-04-2014 14:12:37
B 4	500	23-04-2014 18:20:28
A 2	300	24-04-2014 12:41:52
B 1	400	24-04-2014 16:08:56
C 1	450	24-04-2014 21:47:06
A 6	400	24-04-2014 23:21:31
B 1	500	25-04-2014 01:11:14
A 6	400	26-04-2014 02:06:32
C 1	500	26-04-2014 12:01:47

Fig. 15

Details: Set prices is shown in boxes, location address of the machine, machine №, detailed information of current machine's state, and latest collection time. It is possible to set a mobile phone for SMS errors.

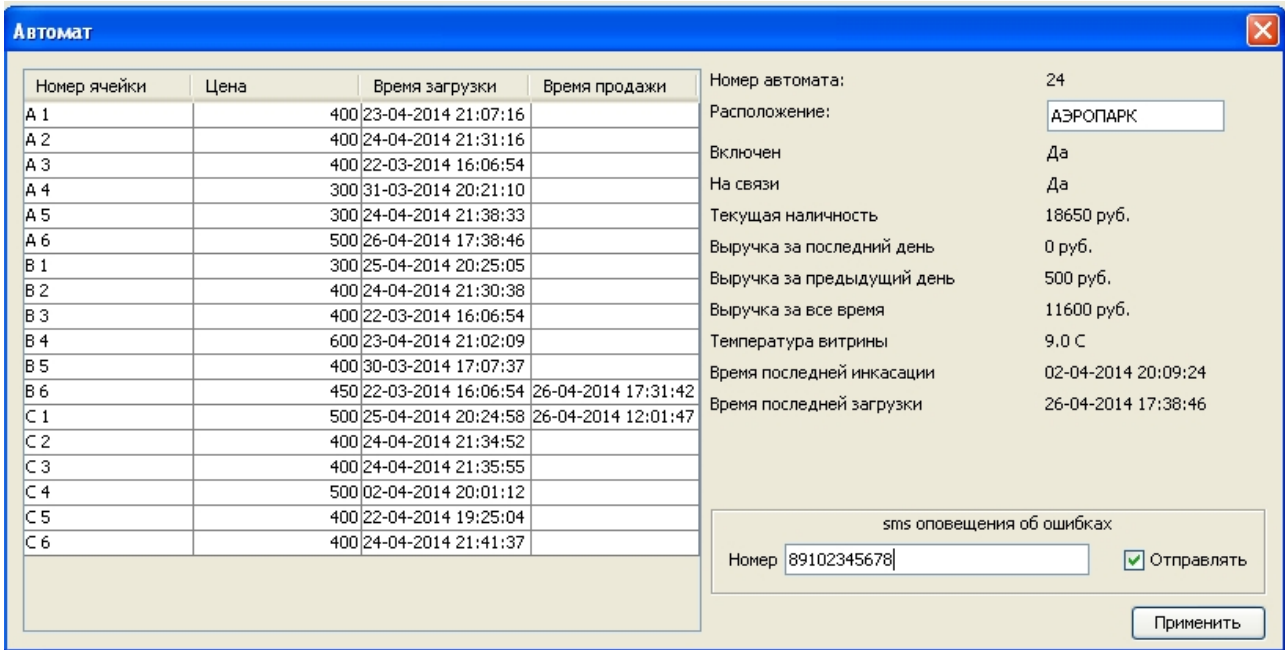


Fig. 16

User: In this menu is possible to change the password for access to statistics program.

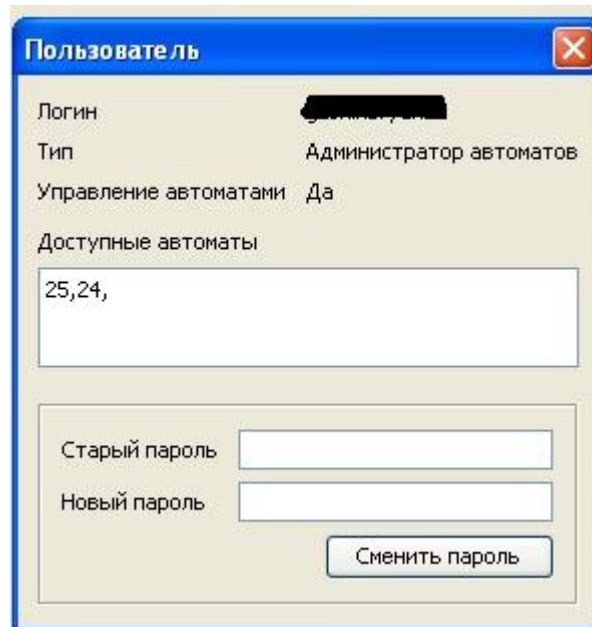


Fig. 17

8. Machine's technical characteristics

8.1. Technical characteristics

The machine corresponds to the execution of UHL 4 according to GOST 15150-69 "Machines, instruments and other technical units. Machine's for different climatic regions. Categories, service conditions, storage and transportation in terms of the climatic factors of the environment", but for operation at temperatures from +5 to +35 °C.

The machine works on AC current 50 Hz, voltage $\sim 220V \pm 10\%$, with compulsory ground contact.

Maximum consumption current, A:	4;
Maximum consumption power, V:	800.

8.2. Mass-dimensional characteristics

Parameter, measurement unit	Dimension
Height, mm:	2030
Width, mm:	800
Depth, mm:	1225
Gross weight, kg, not more:	341
Net weight, kg, not more	300

8.3. Operating conditions

The machine must be installed on a flat hard horizontal surface avoiding vibration and sudden jolts. Canting angle should not exceed 10 degrees in any plane. The operation of the machine is allowed without frequent sharp temperature changes. Any liquids and metal objects must be avoided inside the machine, as well as integral part breaking for any purpose.

It is recommended to switch on the machine not earlier than 2 hours after taking the machine into the room after long staying in the wet room.

8.4. Transportation and storage

During transportation the temperature of the environment must be from 30 to +40°C.

Storage conditions must correspond to 1 group (L) according to GOST 15150.

Transportation must be executed in package to prevent from vibration and sudden jerks. Exclude any liquids and foreign objects inside the package.

Temperature and moisture conditions must correspond to operation conditions.

9. Machine's completing units of machine

1. Assembled vending machine - 1 pce;

With following components:

- Central control unit (electronic card) - 1 pce;
 - Conditioning system Aspera Embraco – 1pce;
 - Check printer APS KM 324HRS – 1 pce;
 - Cash acceptor ICT A7 or SMARTPAYOUT (with note cash back option) – 1 pce;
 - Network cable (to 2 m) – 1pce;
 - Key lock – 3 pcs;
2. Keys to key lock – 6 pcs;
3. Technical passport - 1 pce;
4. Machine manual – 1 set;
5. Package – 1 pcs.

10. Warranty

Warranty period is 12 months from the date of machine's delivery.

The manufacturer guarantees the conformity of the machine to the requirements of the design documentation at consumer's observance of the terms of transportation, storage and operation.

Contact the manufacturer for technical support as follows:

«Newtech» LLC

241041, Bryansk, Ryabinovaya str., bld..8A

Tel.: +7 (4832) 30-14-95

Mobile.:8-905-177-15-15

www.newtechrussia.ru

e-mail: newtech2000@mail.ru

WARNING: Used in this manual trademark "FLOVEND" and associated images are the property of "Newtech" LLC and is protected by Federal law.